

# SCUFFPROOF™ MATTE

## PREMIUM LAMINATE FILM

### SETTING A NEW STANDARD IN THE WORLD OF LAMINATING FILMS

**ScuffProof™ Matte** film, an Innové exclusive, is the new standard in premium scuff-protection film. Different from every other type of anti-scuff film on the market, ScuffProof™ utilizes new secret technology that changes the molecular structure of the film surface, through a chemical reaction, to greatly increase the hardness and durability.

**ScuffProof™ Matte** is built on a very stable BOPP film base, and has no “coating” that can scratch off or burnish, like other anti-scuff films. Boasting an extreme hardness level, the film is perfect for a huge range of consumer and high use products that need an ultra-smooth, ultra-protective surface. In addition to durability, **ScuffProof™ Matte** is very versatile, allowing the bonding of spot UV coating, glues, and foil stamping with ease.

### KEY BENEFITS

- Completely Scuff and Burnish Resistant
- Reduces Spoilage to Zero
- Highly Cost Competitive
- Extreme Surface Hardness
- Accepts Spot UV; Glueable and Stampable
- 100% Gold Seal™ Guaranteed

### SUGGESTED USES

- High Use Pocket Folders
- Promotional Pieces
- Business Cards
- Soft and Hardbound Book Covers
- Cosmetic and Jewelry Packaging
- Electronics Packaging
- Three Ring and Media/Binders and Cases
- Liquor and Luxury Product Packaging
- High Use Folding Carton Packaging
- Rigid Boxes



Properties	Side	Value	Units	Test Method / Standard
Thickness		1.2	Mil	DIN EN ISO 534
		30	Microns	
Haze		91.6	%	ASTM D1003
Gloss		6	GU	ASTM D2457
Dyne Level		16-Feb	Dyne	DIN 55660-2
Application Temperature		212-248°F (100-120°C)	°F (°C)	Various Equipment- Always Test
Lamination Tensile Strength	MD	58.4	N/ mm <sup>2</sup>	ASTM D882
	TD	123.7	N/ mm <sup>2</sup>	

A = Adhesive Side    B = BOPP Side    MD = Main Direction    TD = Transverse Direction

### ALSO AVAILABLE

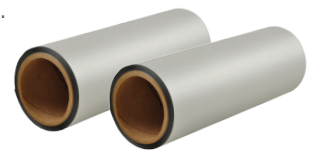
**ScuffProof™ Satin** - Designed for those who want an extra level of sheen, with the toughness of ScuffProof™ Matte

- Enhances darker colors

**ScuffProof™ Extra Matte** - (in development)

- Designed to closely mimic the look and feel of basic matte BOPP, with the toughness of ScuffProof™ Matte.

**ScuffProof™ TT** - Designed specifically for the label market, to allow thermal transfer printing on the surface while maintaining the toughness of ScuffProof™ film.



INSPIRING FINISHES. BRILLIANT RESULTS.